

# Our Furry Friends

## Fun Facts:

- Chinchillas are rodents that are related to guinea pigs and porcupines.
- They have bushy tails, four legs and round ears.
- Chinchillas are native to the Andes Mountains in northern Chile.
- Chinchillas like cold weather and cannot survive if the temperature is over 80 degrees.
- In the wild, chinchillas live in underground tunnels or in-between rocks.
- Baby chinchillas are kits and are born in litters of one to six babies.
- Chinchillas are omnivores, eating both plants and meats such as insects, bird's eggs, grass and seeds.
- They live between 8-20 years in the wild.



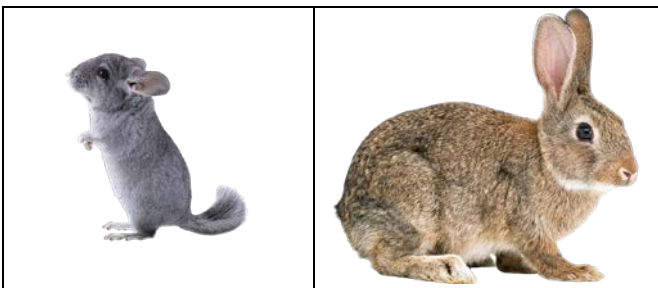
## Fun Facts:

- Rabbits are mammals.
- A female rabbit is called a doe.
- A male rabbit is called a buck.
- A young rabbit is called a kit or kitten.
- Rabbits are born with their eyes closed and without fur.
- Rabbits are herbivores (plant eaters).
- A rabbit's teeth are very strong and never stop growing.
- They live up to 10 years.
- There are many kinds of rabbits. Graycee is a Lionhead. She has a "mane" of fur, which looks similar to the mane of a lion.



## Activities:

**Describe how these 2 animals are alike and how they are different.**

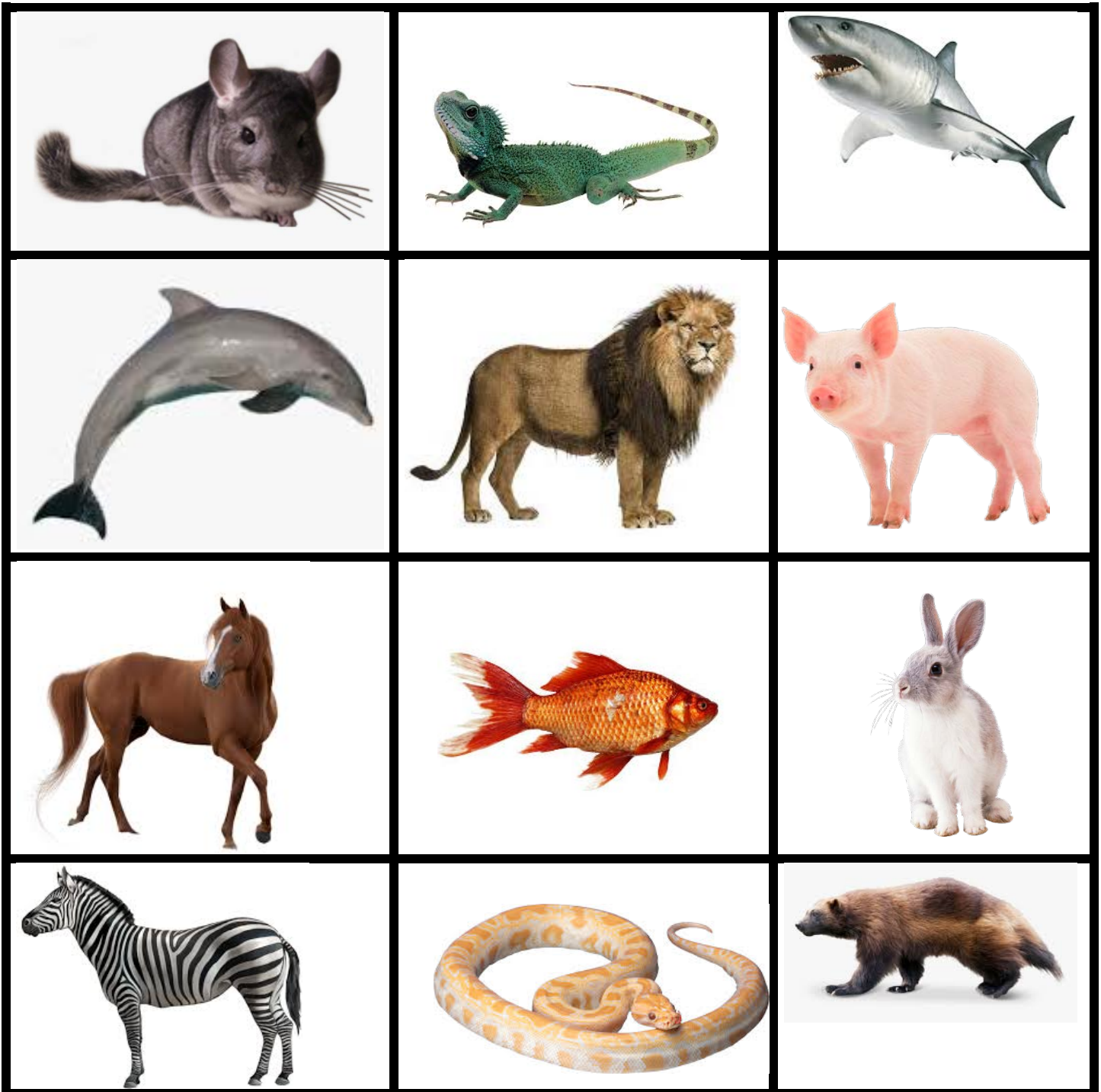


## Questions to ask:


- Which animal is bigger/smaller?
- How is their body covering alike/different? (texture, color, type of body covering)
- How do these animals move? (hop, jump, fly, swim, climb, etc.)
- What body characteristics are the same/different? (number of feet, length of tail, size of ears, etc.)
- What do these animals eat?
- Where do they live?



**Body Covering Sort:**

- Print the attached pages and cut the sorting pieces.
- Sort the animals based on their body covering.



# Body Covering Sort

 and sort the animals. Place them under the picture that matches their body covering.

 Fur	Bare Skin	 Scales

**Match each animal head with the appropriate body.**

**Discuss each animals' characteristics, including the animals body covering.**

